

FOR LEASE

Retail Store

AVAILABLE SQ.FT.: 1,500

LAND SQ.FT.: POL



7773 W SUNSET BLVD, LOS ANGELES, CA 90046

Heavy Traffic Corner With Excellent Exposure

- Fantastic location at the northeast corner of Sunset Blvd & Ogden Drive
- Great signage and visibility
- 149' frontage on Sunset Blvd and 137' on Ogden Drive
- Two-story shopping center built in 1983
- 44,898 vehicles per day traffic count (2017)
- Zoned LA C1
- Just two blocks east of Fairfax Avenue
- 24 car free customer parking (shared) — No tenant parking
- Lease rental: \$5,250 per month (\$3.50 per sq.ft. NNN)
NNN charges = \$0.95 per sq.ft. per month

For More Information, Please Contact

MARK WILLIAMS

(213) 222-1204

mwilliams@majorproperties.com

CA BRE LIC. # 02031607

JEFF LUSTER

(213) 747-4152

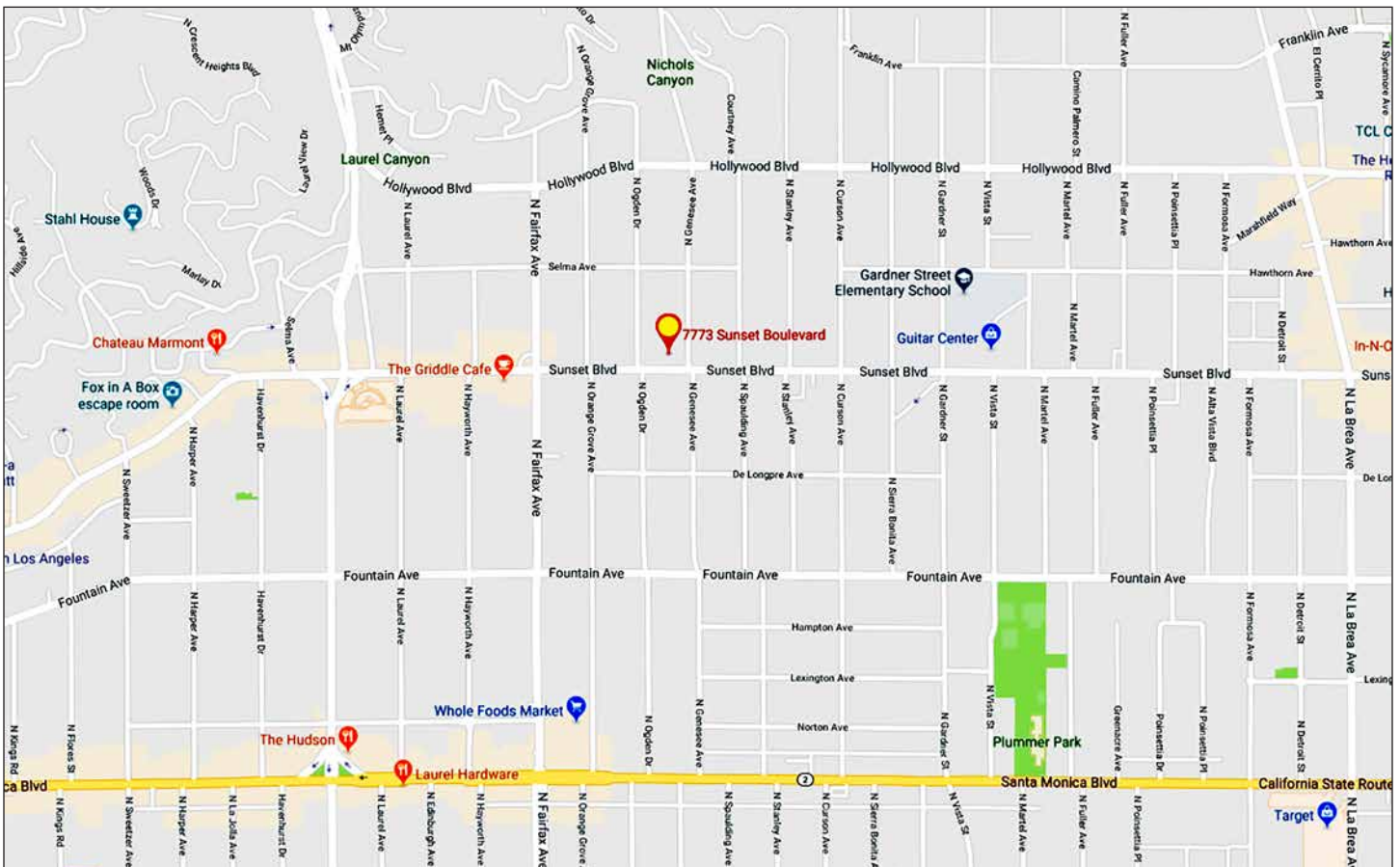
jeff@majorproperties.com

CA BRE LIC.#00636424

The information contained herein is furnished by sources we deem reliable, but for which we assume no liability. It is given in confidence and with the understanding that all negotiations pertaining to the property be handled through the listing office. All measurements are approximate.

FOR LEASE

7773 W SUNSET BLVD, LOS ANGELES, CA 90046



MAJOR PROPERTIES
REAL ESTATE
Commercial • Industrial • Residential

1200 West Olympic Boulevard, Los Angeles, California 90015
213.747.4151 • fax 213.749.7972 • www.majorproperties.com

